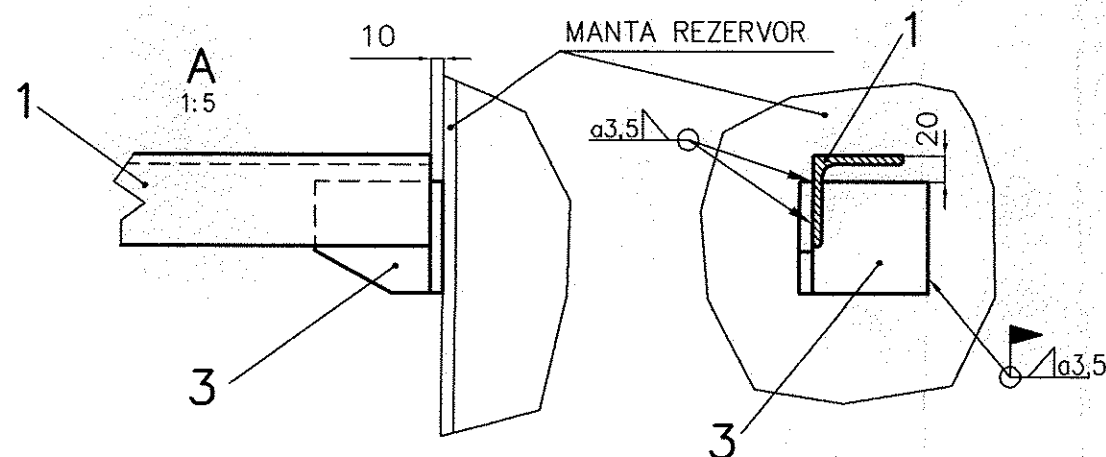
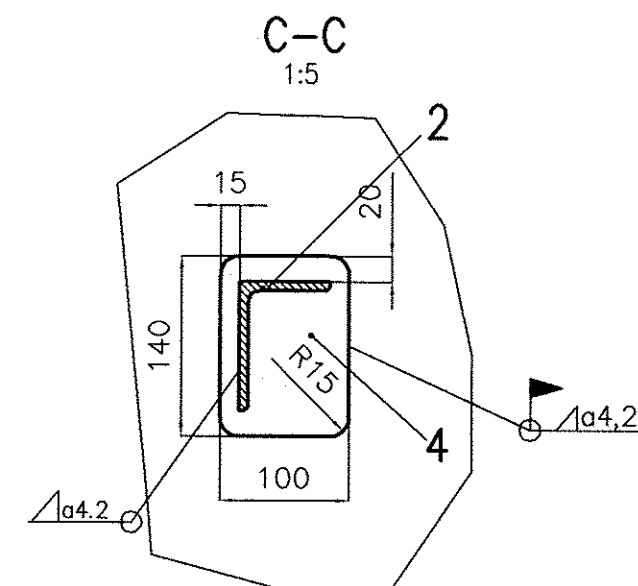
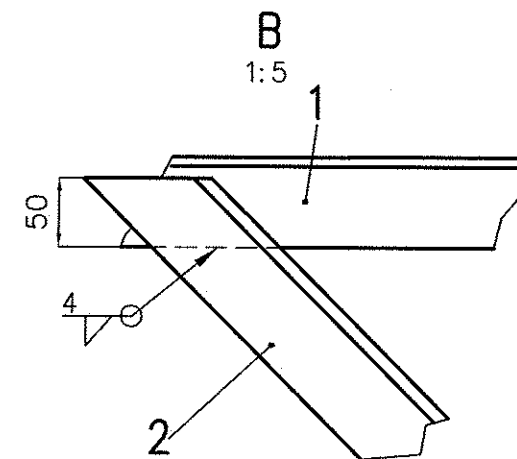
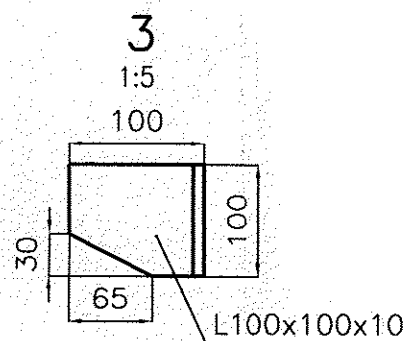
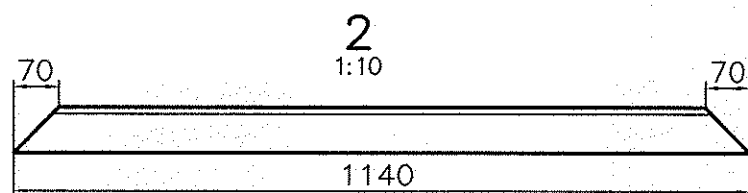
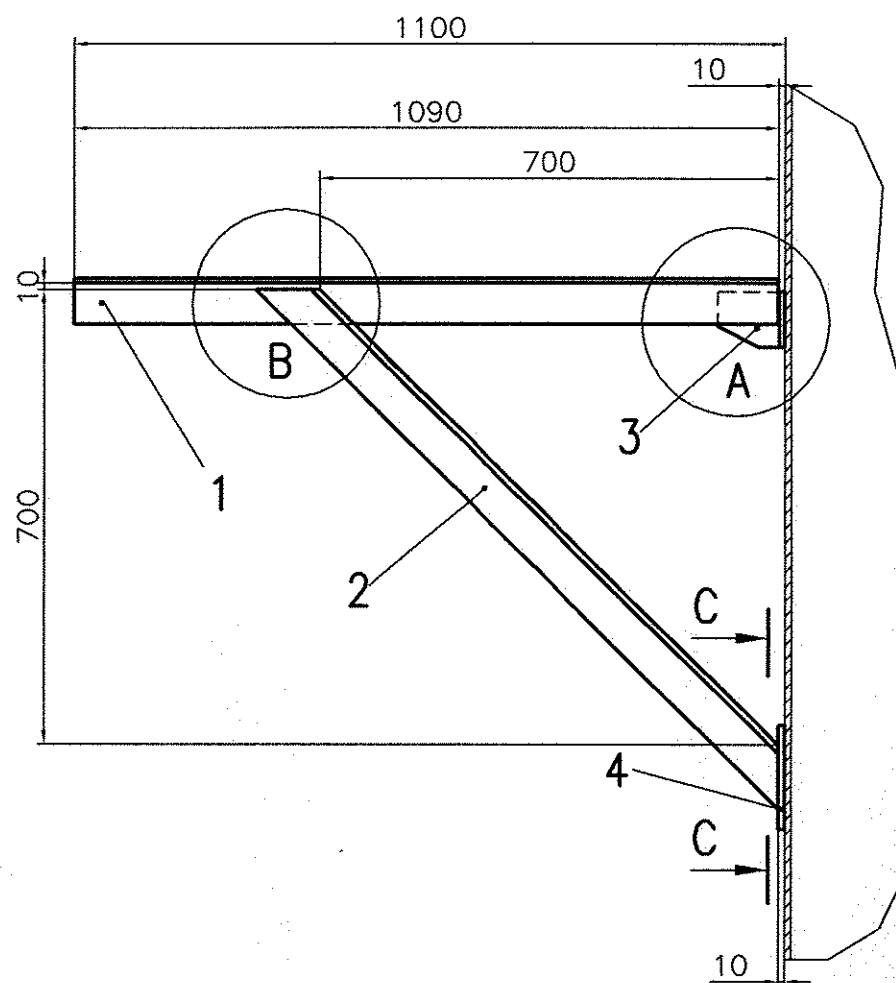


ACEST DOCUMENT ESTE PROPRIETATEA SOCIETATII ELLIS'92 S.R.L. - PLOESTI. IN CONSECINTA, FIRMA ARE DREPTUL EXCLUSIV DE FOLOSIRE A DESENULUI SAU DE OPERARE A EVENTUALELOR MODIFICARI DIN CAMPUL SUU.



## NOTA

- Cantitatile din tabel sunt calculate pentru o bucata consola;
- Necesari pentru scari: 8 bucati
- Necesari pentru platforma intermediara: 2 bucati

Poz.	DENUMIREA	Nr.DESEN sau STAS	BUC.	MATERIAL	OBS.	Masa kg/buc
4	Placa	SR EN 10025-2:2004	1	S235J2	Tb100x140x10	1,10
3	Element prindere	SR EN 10025-2:2004	1	S235J2	L100x100x10-100	1,50
2	Diagonala	SR EN 10025-2:2004	1	S235J2	L70x70x10-1140	11,74
1	Consola	SR EN 10025-2:2004	1	S235J2	L70x70x8-1100	9,20
	Electrozi	SR EN ISO 2560:2010				0,70
Acest document este proprietatea S.C. ELLIS'92 S.R.L. si nu va fi comunicat fara autorizare						
Intocmit	Verificat	Aprobat	Beneficiar		Denumire proiect	
S.B.	N.R.	A.N.	CONPET SA		CONSTRUCTIE REZERVOR NOU PENTRU TITEI (V=2500 mc) STATIA DE POMPARE POIANA LACULUI ARGES	
92 ELLIS arhitectura proiectare inginerie consultanta tehnica				CONSOLA SCARA		Nr.: A643U-03.04 Rev.0
Material:				Masa: 24,24 kg		Scara: 1:100
						Index: A643U-B0
						Data: 07.2018
						Plansa: 1/1